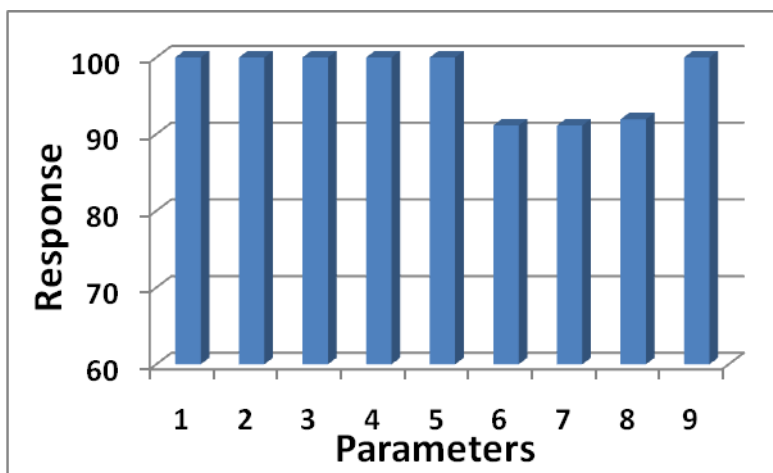


# **WOMEN'S COLLEGE, AGARTALA**

## **INTERNAL QUALITY ASSURANCE CELL**

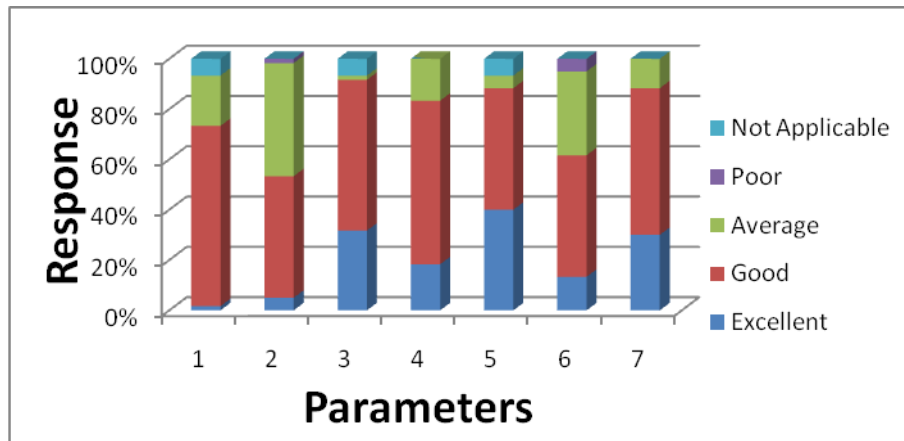
### **FEEDBACK ANALYSIS 2018-19**

#### **Parents' Feedback Analysis**

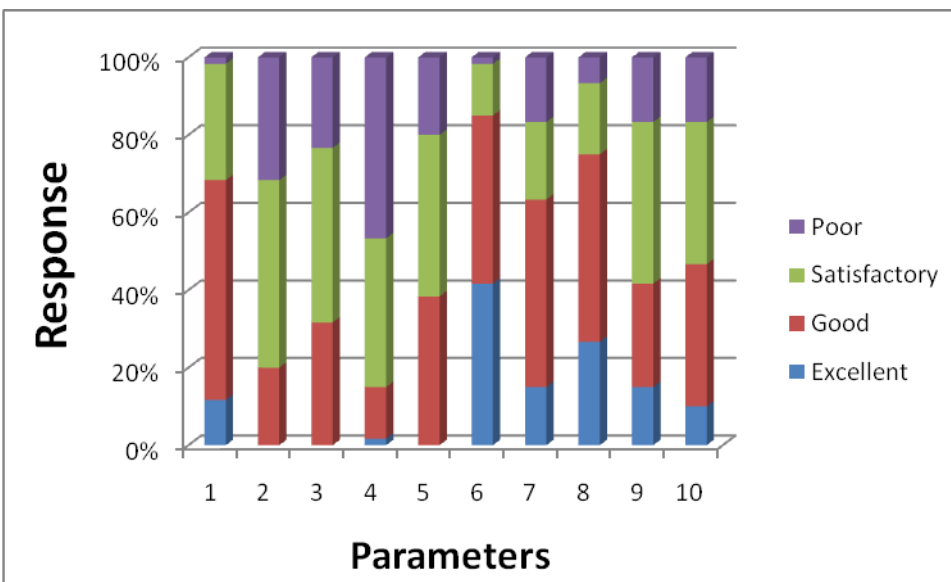


1. How much are you satisfied with the progress of your daughter/ward, who is undergoing study at Women's College?
2. How much do you think that teachers of the college have been able to make your daughter/ward interested in the subject/ subjects?
3. How much has your daughter/ ward ever spoken favorably about any teacher of the college?
4. How much do the teachers complete their syllabus in time?
5. How much are you satisfied with the evaluative process of the teachers?
6. How much are you satisfied about the help extended by the academic/ administrative section of the college?
7. How much are you satisfied about the existing infrastructure/ facilities of the college?
8. How much are you satisfied with the library facilities of the college?
9. How much are you satisfied about the extra-curricular activities (NSS/NCC/ Sports and Games/ Cultural) of the college?

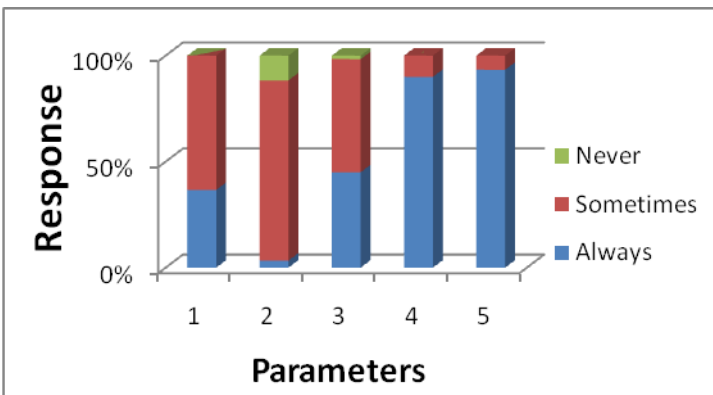
## Teachers' Feedback Analysis



1. **Quality of most of the Hons. students you come across**
2. **Quality of most of the general students you come across**
3. **Hons. Students attention in your class**
4. **General Students attention in your class**
5. **Hons. Students regularity in your class**
6. **General Students regularity in your class**
7. **Your students' interest and participation in co-curricular activities**

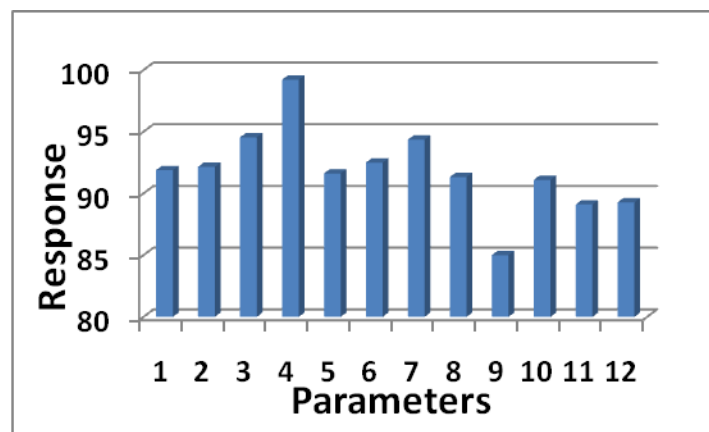


1. **Library facility in the college**
2. **Availability of journals in the Library**
3. **Availability of latest edition books in the library**
4. **Availability of research equipments in the College**
5. **Availability of modern teaching tools in the College**
6. **Work-friendly atmosphere in the college**
7. **Accessibility of computer in the Department**
8. **Availability of internet facility in the Department**
9. **Washroom facility in your building**
10. **Cleanliness of College campus**



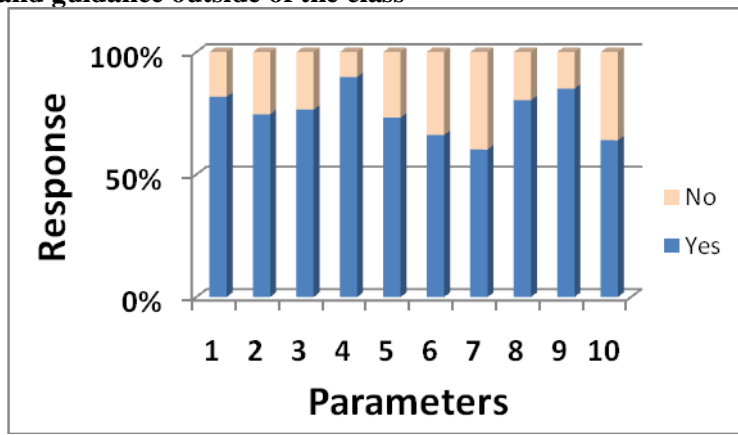
1. **Application of the innovative ideas in the class**
2. **Use of ICT facility in the classroom**
3. **Attending personal problems of your students**
4. **Do you tell the students to switch off lights and fans when they are not necessary?**
5. **Do you wipe the board at the end of the class?**

### **Students' Feedback Analysis**



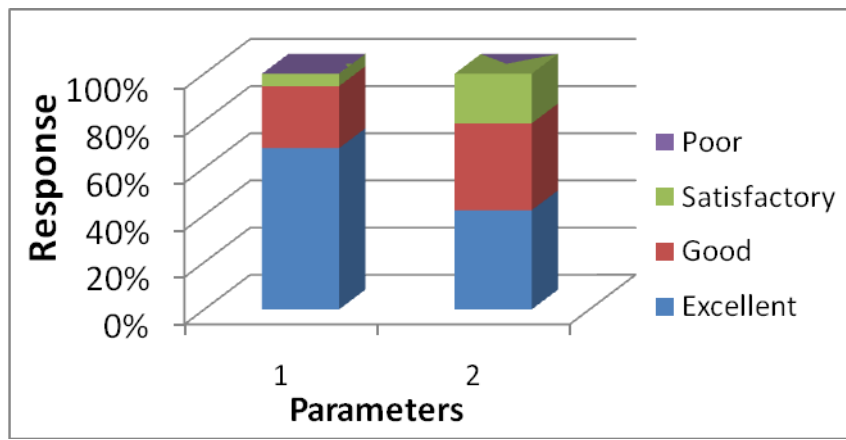
1. **Ability to bring conceptual clarity and promotion of thinking ability by teacher**

2. **Communication Skill**
3. **Regularity and Punctuality**
4. **Subject Knowledge**
5. **Motivation and Inspiration provided**
6. **Confidence provided**
7. **Completion and Coverage of course**
8. **Ability to make the subject/ learning interesting**
9. **Complements theory with practical example**
10. **Solving and satisfying your queries/ difficulties on time**
11. **Contributing to your all-round development/ inclusive growth**
12. **Interaction and guidance outside of the class**

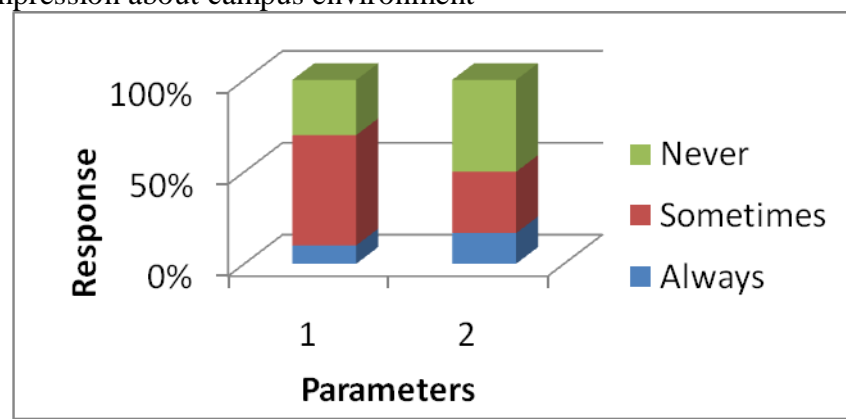


1. **Whether adequate drinking water facility is available in the College?**
2. **Whether adequate washroom facility is available in the College?**
3. **Is the environment of the campus pollution-free?**
4. **Are there adequate safety measures in the College campus?**
5. **Is the study material in the library adequate?**
6. **Do you avail the IT facility of the College?**
7. **Is the IT facility adequate?**
8. **Whether office of the College helps you?**
9. **In your opinion, is the syllabus adequate?**
10. **Whether College-campus is clean?**

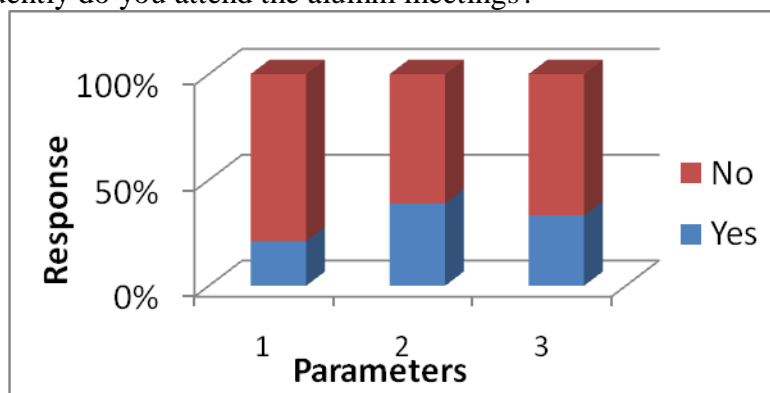
### **Alumni Feedback analysis**



1. Your overall impression about the institution
2. Your impression about campus environment



1. How frequently do you visit the institution as alumni?
2. How frequently do you attend the alumni meetings?



1. Whether you are associated with the institution as an employee
2. Do you wish to contribute in Career counseling /Placement cell of the institution?
3. Do you wish to participate as resource person in the institutional programmes?

## Report

Parents are very much satisfied with the progress of their daughter studying at Women's College. The above analysis reveals favourable opinion of the parents in regard to almost all the parameters considered. The analysis however points out that the assistance extended by the academic/ administrative section of the college, infrastructure and library facilities of the college may be improved.

Teachers are of the opinion that the quality of the Honours students, their attention in class, regularity record is much better than those of the general students. The participation of the students in co-curricular activities is mostly good. The students' feedback analysis reveals that students are contented with the quality of their teachers. The students however stressed the need for teachers to complement theory with practical example, solve and satisfy the students' queries/ difficulties on time, contribute to their all-round development/ inclusive growth. The application of innovative ideas and ICT usage in class are the areas to be improved by the teachers. The library facility though mostly good, the availability of the journals and latest edition books are only satisfactory. The availability of the research equipment is quite frustrating as most of the teachers have indicated it as poor. The availability of the teaching tools in the college is mostly satisfactory followed by an opinion of poor. Still it is a matter of pleasure that the teaching community feels the working atmosphere of the college is almost either excellent or good. As many departments have no departmental room, the availability of the computer as well as internet is not up to the mark. The drinking water and washroom facility of the all the buildings of the college are not same, so there is an opportunity to improve this parameter. Cleanliness of the college campus also deserves attention.

The Alumni feedback analysis bring forth that around fifty percent of the alumni have an excellent impression about the institution while their impression about campus environment is mixed. However, their frequency of visit to the institution as alumni and to attend alumni meetings is irregular. Only a few of the alumni members are associated with the institution as an employee. Some alumni have expressed interest to contribute in Career counseling /Placement cell of the institution and participate as resource person in the institutional programmes.